

Intra Uterine Contraception



01

All traditional copper IUDs are the most effective Emergency Contraceptives, inserted up to 5 days after unprotected intercourse.

All copper IUDs fitted to a woman over the age of 40 years may be left in situ until after the menopause. Recommended replacement intervals shown refer to the use of IUDs in younger women.

M Shape

Load 375 01

Copy of the familiar 'M-Shaped' device with 375mm² copper, for uterine length over 7cm.

Replace every 5 years

IUD0073001

1 to 12

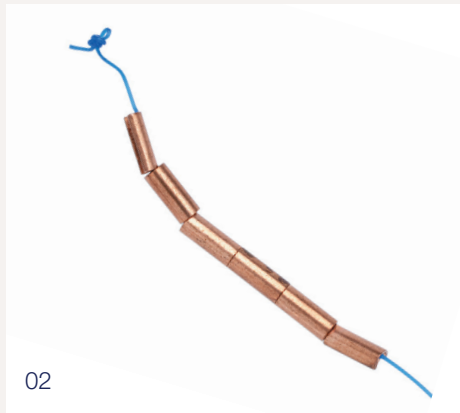
each £7.95

13 to 49

each £7.56

50+

each £7.40



02

Frameless

GyneFix Viz 02

Unique frameless device with 330mm² copper as tubes suspended on a surgical suture, the knot of which is embedded into the myometrium – special training required for fitting. Suitable for all uterine lengths. Stainless steel ring near knot ensures X-Ray visibility.

Replace every 5 years

IUD0041200

£95.00

Plain Copper T

UT 380 Standard 03

Copy of the familiar 'copper T' design, loaded by pulling on the threads to draw the arms back into the introducer, 380mm² copper on vertical stem only. For uterine lengths 6.5 to 9cm.

Replace every 5 years

IUD0072001

1 to 12

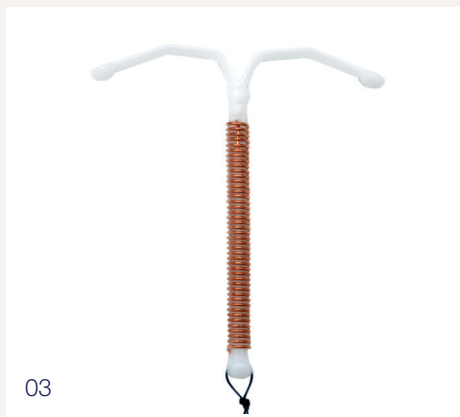
each £8.95

13 to 49

each £8.56

50+

each £8.40



03

UT 380 Short

As above, but now even smaller. Provides 380mm² copper suitable for minimum uterine length of 5cm.

Replace every 5 years

IUD0072002

1 to 12

each £8.95

13 to 49

each £8.56

50+

each £8.40

Discounts available on bulk orders of IUDs.

Intra Uterine Contraception

Copper T 380 devices with additional bands of copper on the horizontal arms give the highest efficacy and longest life in the patient. That's why they are regarded as 'The Gold Standard' by the leading authorities^{1,2,3} and meet the NICE guidelines for LARC.⁴

Banded Copper T

TT 380 Slimline 04

'Banded copper T' design – the 'gold standard', featuring copper on horizontal arms as well as on the vertical stem, 380mm² copper, with easy-loading system and no capsule. For **minimum** uterine length of 7cm.

Replace every 10 years	IUD0071001	
1 to 12		each £9.95
13 to 49		each £9.56
50+		each £9.40
Clinic Pack of 10 without uterine sound	IUD0071010	£84.50

Mini TT 380 Slimline

Mini TT 380 Slimline – the only banded copper T device designed for use in the nulliparous. Features copper sleeves on horizontal arms as well as on the vertical stem, providing 380mm² copper on a short stem and with narrower arms. For **maximum** uterine length of 7cm.

Replace every 5 years	IUD0074001	
1 to 12		each £9.95
13 to 49		each £9.56
50+		each £9.40

A demonstration video of how to load the TT380 Slimline is available on our website.

The Intra Uterine Ball IUD - IUB™ 05

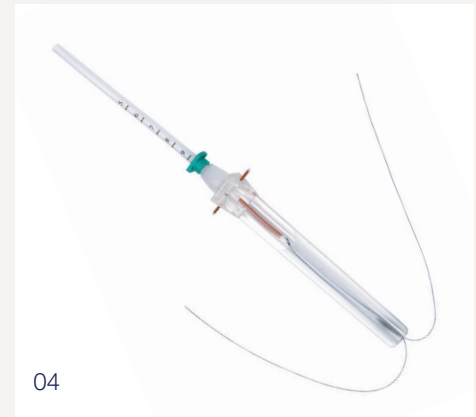
Unique design featuring copper beads on the same memory-retaining material as cardio-vascular stents, which automatically assumes a compliant, flexible 3-D ball-shape upon insertion. Designed to reduce pain, bleeding and expulsion. Tiny insertion tube, 300mm² copper.

Replace every 5 years.	IUB0010001	£38.00
-------------------------------	-------------------	---------------

Efficacy as an emergency contraceptive not yet confirmed.
IUB™ is a trademark of OCON Medical.

References:

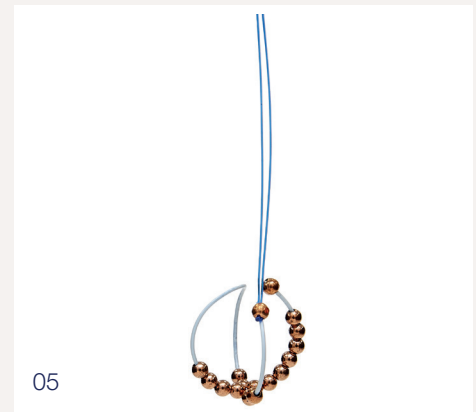
1. Professor J Guillebaud, Reviews in Gynaecological Practice, 1, (1), 2001, 24-31
2. Jo Dennis & Naomi Hampton, The Journal of Family Planning & Reproductive Healthcare, 28, (2), 2002, 61-68
3. Sunanda Gupta & Rosemary Kirkman, The Obstetrician & Gynaecologist, 1, (4), 2002, 37-43
4. NICE Clinical Guideline 30, October 2005



04



04



05

Intra Uterine Contraception



Intra Uterine System

Mirena 06

See SmPC and/or MIMS for prescribing information, etc.

IUS0011100

£88.00

Levosert

See SmPC and/or MIMS for prescribing information, etc.

IUS0020001

£66.00

Jaydess

Smallest IUS available. See SmPC and/or MIMS for prescribing information, etc.

IUS0011101

£69.22

Emergency Contraception



Emergency Contraception

EllaOne 07

See SmPC and/or MIMS for prescribing information, etc.

1 to 9
10+

PILL0080101

£14.05
£13.88

Copper IUDs – All traditional copper IUDs (see pages 4 & 5) may be used as Emergency Contraceptives up to 5 days after unprotected intercourse. They are always more effective than medical methods, and in addition, they may be used for continuing long-term contraception.